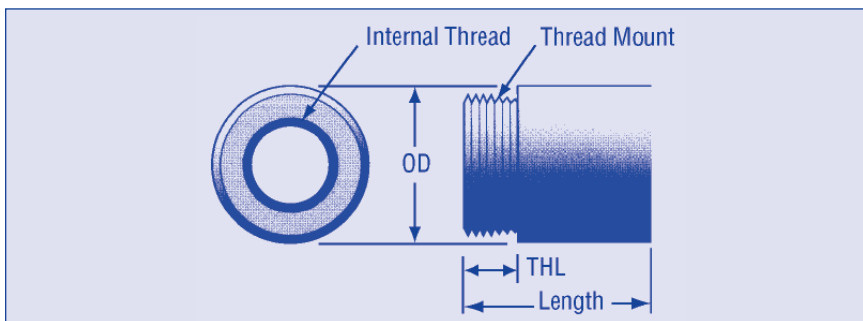


PLAIN STYLE LEAD SCREW NUT

THREADS
3/16-20 – 5/8-10

COMMERCIAL QUALITY



Material: Turcite® X Engineered Thermoplastic

Order MAH-B1 series Flanges and MAS-A1 series Lead Screws (.003 lead accuracy) separately.

ORDER BY CATALOG NUMBER

Catalog Number	Internal Threads	Starts	Lead	Thread Type	Outside Dia. OD	Length L	Thread Mount	Thread Len. THL	Dynamic Capacity	Static Capacity			
MAH-A1-0	3/16-20	1	.050	Acme	3/4	3/4	5/8-18	.250	30	150			
MAH-A1-1	1/4-20	1	.050	Acme	3/4	3/4	5/8-18	1/4	24	210			
MAH-A1-2	1/4-16	1	.063	Acme					24	205			
MAH-A1-3	5/16-12	2	.167	Acme	3/4	3/4	5/8-18	1/4	36	380			
MAH-A1-4	5/16-8	2	.250	stub Acme					22	231			
MAH-A1-5	5/16-8	4	.500	stub Acme					22	231			
MAH-A1-6	3/8-20	1	.050	Acme	3/4	3/4	5/8-18	1/4	36	490			
MAH-A1-7	3/8-16	1	.063	Acme					36	482			
MAH-A1-8	3/8-12	1	.083	Acme					36	466			
MAH-A1-9	3/8-10	1	.100	Acme					36	455			
MAH-A1-10	3/8-8	1	.125	stub Acme					22	284			
MAH-A1-11	3/8-12	2	.167	stub Acme					22	294			
MAH-A1-12	3/8-10	2	.200	stub Acme							22	290	
MAH-A1-13	3/8-8	2	.250	stub Acme									22
MAH-A1-14	3/8-8	3	.375	stub Acme					1/4	22	284		
MAH-A1-15	3/8-8	4	.500	stub Acme								22	284
MAH-A1-16	3/8-5	5	1.000	stub Acme	22	264							
MAH-A1-17	3/8-4	5	1.200	stub Acme			22	262					
MAH-A1-18	7/16-8	2	.250	stub Acme									
MAH-A1-19	7/16-8	4	.500	stub Acme	.790	1"	5/18-18	1/4	29	448			
MAH-A1-20	1/2-12	1	.083	Acme	1"	1"	15/16-16	3/8	48	858			
MAH-A1-21	1/2-10	1	.100	Acme					48	839			
MAH-A1-22	1/2-10	2	.200	stub Acme					29	526			
MAH-A1-23	1/2-4	2	.500	Ball					29	476			
MAH-A1-24	5/8-10	1	.100	Acme					1"	1"	15/16-16	3/8	48
MAH-A1-25	5/8-8	1	.125	stub Acme	29	658							
MAH-A1-27	5/8-10	2	.200	stub Acme	29	666							

Other sizes available upon request. See mount section for flanges.

Turcite® is a registered trademark of W.S. Shamban Company.

NORDEX

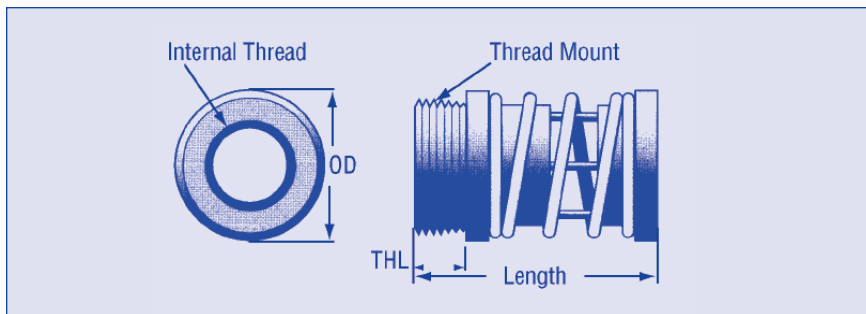
(800) 243-0986 In CT: (203) 775-4877 info@nordex.com

4M

ANTI-BACKLASH LEAD SCREW NUTS

THREADS
3/16-20 – 5/8-10

COMMERCIAL QUALITY



Material: Turcite® X Engineered Thermoplastic

Order MAH-B1 series flanges and MAS-A1 series lead screws (.003 Lead Accuracy) separately.

ORDER BY CATALOG NUMBER

Catalog Number	Internal Threads	Starts	Lead	Thread Type	Outside Dia OD	Min to Max Length	Thread Mount	Thread Len. THL	Preload Min. lb	Preload Max. lb
MAH-A2-0	3/16-20	1	.050	Acme	3/4	1.09 to 1.34	5/8-18	1/4	1.0	4.0
MAH-A2-1	1/4-20	1	.050	Acme					.30	6.0
MAH-A2-2	1/4-16	1	.063	Acme					.38	6.0
MAH-A2-3	5/16-12	2	.167	Acme	3/4	1.09 to 1.34	5/8-18	1/4	.50	6.0
MAH-A2-4	5/16-8	2	.250	stub Acme					.75	
MAH-A2-5	5/16-8	4	.500	stub Acme		1.47 to 2.00			.35	7.4
MAH-A2-6	3/8-20	1	.050	Acme	3/4	1.09 to 1.34	5/8-18	1/4	.30	6.0
MAH-A2-7	3/8-16	1	.063	Acme					.38	
MAH-A2-8	3/8-12	1	.083	Acme					.50	
MAH-A2-9	3/8-10	1	.100	Acme					.60	
MAH-A2-10	3/8-8	1	.125	stub Acme					.75	
MAH-A2-11	3/8-12	2	.167	stub Acme					3/4	
MAH-A2-12	3/8-10	2	.200	stub Acme	.60					
MAH-A2-13	3/8-8	2	.250	stub Acme	.75					
MAH-A2-14	3/8-8	3	.375	stub Acme	3/4	1.47 to 2.00	5/8-18	1/4	.35	7.4
MAH-A2-15	3/8-8	4	.500	stub Acme					.35	
MAH-A2-16	3/8-5	5	1.000	stub Acme					.35	
MAH-A2-17	3/8-4	5	1.200	stub Acme					.64	
MAH-A2-18	7/16-8	2	.250	stub Acme	.790	1.55 to 2.00	5/8-18	1/4	.19	5.6
MAH-A2-19	7/16-8	4	.500	stub Acme					.19	
MAH-A2-20	1/2-12	1	.083	Acme	1"	1.43 to 2.06	15/16-16	3/8	.48	11.1
MAH-A2-21	1/2-10	1	.100	Acme					.48	
MAH-A2-22	1/2-10	2	.200	stub Acme					.90	
MAH-A2-23	1/2-4	2	.500	Ball					.48	
MAH-A2-24	5/8-10	1	.100	Acme	1"	1.43 to 2.06	15/16-16	3/8	.48	11.1
MAH-A2-25	5/8-8	1	.125	Acme					.48	
MAH-A2-27	5/8-10	2	.200	stub Acme					.90	

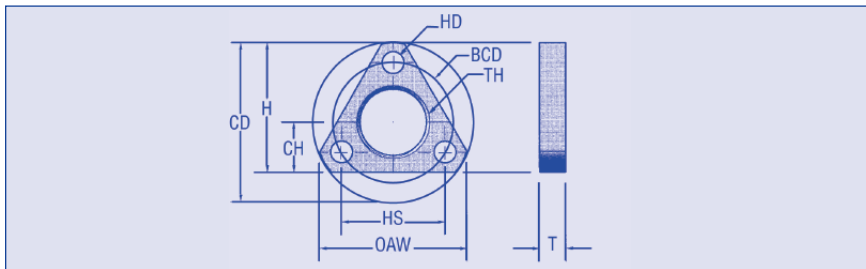
Other sizes available upon request. See mount section for flanges.

Turcite® is a registered trademark of W.S. Shamban Company.

MOUNTING FLANGES

THREADS
5/8-18 & 15/16-16

TRIANGULAR CONFIGURATION COMMERCIAL QUALITY



Material: Lightweight Structural Plastic.

For use with MAH-A1 AND MAH-A2 series Plain and Anti-backlash nuts.

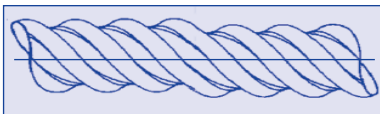
ORDER BY CATALOG NUMBER

Catalog Number	Height H	Thread TH	Bolt Circle Diameter BCD	Clearance Diameter CD	Hole Diameter HD	Screw Size S	Center Height CH	Hole Spacing HS	Overall Width OAW	Thickness T
MAH-B1-1	1.219	5/8-18	1.125	1.50	1.98/208	#10	.469	.974	1.41	.250
MAH-B1-2	1.406	15/16-16	1.375	1.75	1.98/208	#10	.531	1.191	1.62	.375

ROLLED ACME LEAD SCREWS

SCREW DIAMETER
3/16 – 5/8

COMMERCIAL QUALITY



Lead Screws to be used with MAH-A1 and MAH-A2 series Plain and Anti-Backlash nuts. To specify overall length, add length in inches to end of catalog number.

Material: 300 Series Stainless Steel. Special journal end machining available.

LEAD ACCURACY: .003" per foot.

Catalog Number	Size	Lead	Thread	Starts
MAS-A1-0	3/16-20	.050	Acme	1
MAS-A1-1	1/4-20	.050	Acme	1
MAS-A1-2	1/4-16	.063	Acme	1
MAS-A1-3	5/16-12	.167	Acme	2
MAS-A1-4	5/16-8	.250	stub Acme	2
MAS-A1-5	5/16-8	.500	stub Acme	4
MAS-A1-6	3/8-20	.050	Acme	1
MAS-A1-7	3/8-16	.063	Acme	1
MAS-A1-8	3/8-12	.083	Acme	1
MAS-A1-9	3/8-10	.100	Acme	1
MAS-A1-10	3/8-8	.125	stub Acme	1
MAS-A1-11	3/8-12	.167	stub Acme	2
MAS-A1-12	3/8-10	.200	stub Acme	2

Catalog Number	Size	Lead	Thread	Starts
MAS-A1-13	3/8-8	.250	stub Acme	2
MAS-A1-14	3/8-8	.375	stub Acme	3
MAS-A1-15	3/8-8	.500	stub Acme	4
MAS-A1-16	3/8-5	1.000	stub Acme	5
MAS-A1-17	3/8-4	1.200	stub Acme	5
MAS-A1-18	7/16-8	.250	stub Acme	2
MAS-A1-19	7/16-8	.500	stub Acme	4
MAS-A1-21	1/2-10	.100	Acme	1
MAS-A1-22	1/2-10	.200	stub Acme	2
MAS-A1-23	1/2-4	.500	Ball	2
MAS-A1-24	5/8-10	.100	Acme	1
MAS-A1-25	5/8-8	.125	stub Acme	1
MAS-A1-27	5/8-10	.200	stub Acme	2